

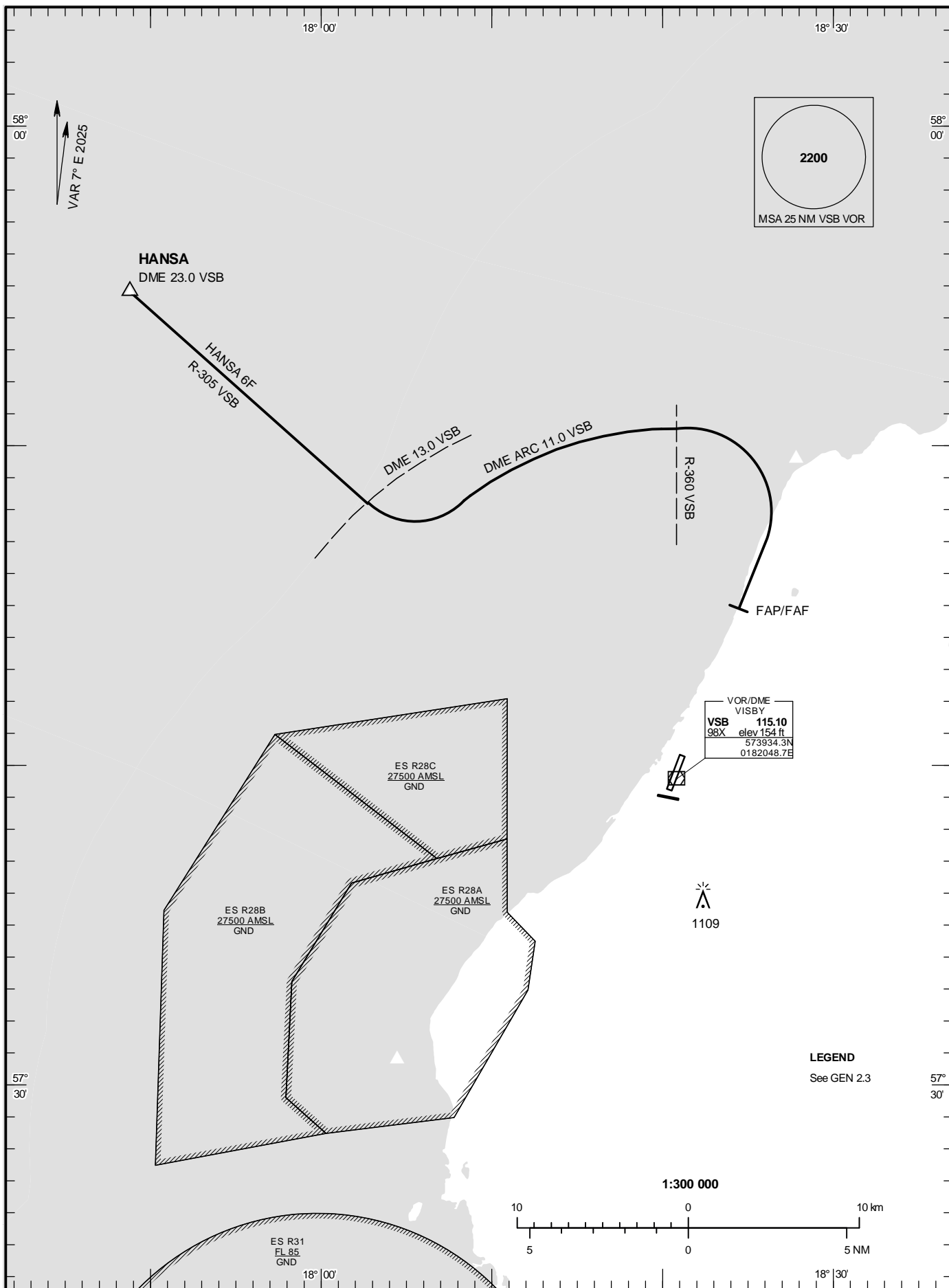
**STANDARD ARRIVAL
CHART - INSTRUMENT
(STAR) - ICAO**

HGT and ALT in ft
BRG are MAG
TA 5000 ft AMSL

VISBY TOWER	120.305
VISBY APPROACH	126.155

**VISBY
RWY 21**

HANSA 6F



CHANGE: Editorial

VISBY

ARRIVAL (STAR) RWY 21

REMARK

Decent to a minimum altitude for an arrival route must not be initiated until an ATC clearance to this altitude or an approach clearance has been received.

HANSA 6F (HANSA SIX FOXTROT ARRIVAL)

At HANSA intercept VSB R-305 and proceed to DME 13.0 VSB. Turn left and intercept DME ARC 11.0 VSB. At R-360 VSB, turn right to intercept LOC SV, not below 1800 ft until FAP/FAF.